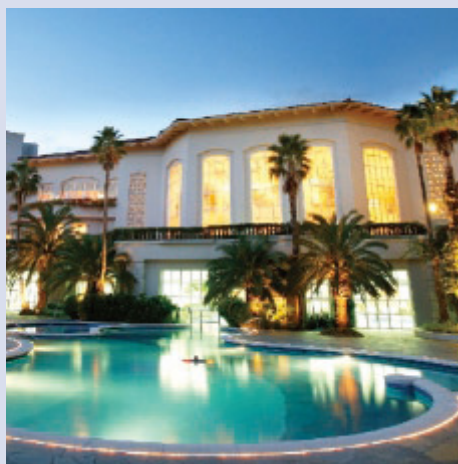


# THE SHILLA JEJU

The Shilla Jeju  
3039-3, Saekdal-dong, Seogwipo-si,  
Jeju-do, 697-808 Korea  
Tel.82(64)735-5114 Fax.82(64)735-5415  
http://www.shilla.net/en/jeju/  
e-mail: jejushilla@samsung.com



**General Information:** *Check-In: 14:00 Check-Out: 12:00*  
*Credit Cards Accepted: VISA, JCB, DINERS, AMEX, MASTER*  
*Guest Rooms: 429*  
*Buildings: 7 stories*  
*Opening: July 1990*

**Location:** The Shilla Jeju, as the leading resort hotel in Korea since its opening and the first chain hotel of The Shilla Hotels & Resorts, was named to keep The Shilla's reputation and to become known internationally and to strengthen its relationship with the Jeju country. The Shilla Jeju, a seven-storied European resort life style hotel, offers 429 spacious deluxe rooms, six international restaurants and bar, seven banquet halls, fitness club equipped with indoor/outdoor swimming pool, sauna, spa, casino. The Shilla Jeju, with a breathtaking sea view, art works of world famous artists well matched with bright-colored interiors and beautiful tropical garden, offers additional comfort and relaxing atmosphere.

**Access:** 50 minutes from Jeju International Airport.

## Restaurants:

*Japanese: Hinode* (Private rooms available)  
*Korean: Cheonjee* (Private rooms available)  
*Western: The Park view*  
*Lounge: Badang*

*Capacity*  
82  
106  
150  
50

## Bar:

Ollae

*Capacity*  
42

## Facilities & Services:

### Rooms

Air conditioning  
Alarm clock  
Facilities for physically challenged guests  
Hair dryer  
In-room safe  
International call  
Internet line/High-speed access  
Mini-bar/Refrigerator  
Non-smoking rooms  
Pay TV/Satellite TV  
Separate shower and bath

### Services

Currency exchange  
Executive Service Salon  
(w/private meeting room,  
secretarial services,  
personal computer  
w/internet access, etc.)  
Laundry/Valet service  
Massage/Shiatsu  
Physician  
Room service (24hours)  
Safe-deposit box

### Other Facilities

Barber shop  
Beauty shop  
Kid's room  
Parking lot (700cars)  
Shoeshine  
Shopping arcade  
Travel agency

### Recreation

Casino  
Fitness Club  
(w/gym, indoor swimming pool, sauna,  
massage, etc.)  
Outdoor swimming pool  
Golf driving range  
Tennis court  
Spa  
Luxury beach house  
Glamping zone  
PSP game zone

## Banquet and Conference Facilities (Total of 7 rooms):

	Capacity				Area m <sup>2</sup>
	Theater	School	Banquet	Reception	
Halla Hall	900	600	500	600	724
Camellia Hall	200	120	250	350	810
Lotus Hall	450	300	250	350	452
Lotus Reception	250	200	120	200	254
Weolla	100	70	50	90	130
Sara	80	60	40	70	112
Rose	40	30	30	30	75
Lily	30	20	20	20	64
Mara	15	15	10	15	46

## For reservations and further information, please contact your nearest Okura Hotels & Resorts Office:

Korea Sales Office: Tel. 82(2)766-5959, Fax. 82(2)766-5964 / Hong Kong Sales Office: Tel. (852)2895-1717, Fax. (852)2895-1909 / Taiwan Sales Office: Tel. 886(2)2706-0365, Fax. 886(2)2706-0009  
New York Sales Office: Tel. 1(212)845-0563 / Los Angeles Sales Office: Tel. 1(424)214-1503 / London Sales Office: Tel. (44) 20-7290-5074 / Paris Sales Office: Tel. (33) 1-5367-1027  
Frankfurt Sales Office: Tel. (49) 69-13885-124 / Moscow Sales Office: Tel. (7) 495-221-7412

# The Shilla Jeju

JEJU, KOREA

3039-3, Saekdal-dong, Seogwipo-si, Jeju-do, 697-808 Korea  
 Tel: 82(64)735-5114 Fax: 82(64)735-5414  
<http://www.shilla.net/en/jeju/> e-mail: jejushilla@samsung.com

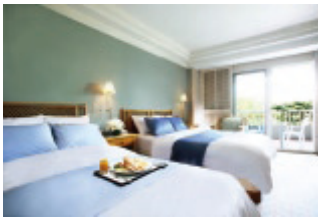
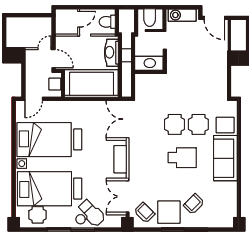
## Guest Rooms

Room Type		Rooms	sq.ft.	m <sup>2</sup>
Mountain View	Standard	4	420	39
	Superior	87	420	39
	Deluxe	64	420	39
	N/Superior	20	495	46
	N/Deluxe	20	495	46
Luxury	7	495	46	

Room Type		Rooms	sq.ft.	m <sup>2</sup>
Orcan View	Garden	48	420	39
	Superior	48	420	39
	Deluxe	60	420	39
	N/Superior	14	495	46
	N/Deluxe	14	495	46
Luxury	5	495	46	

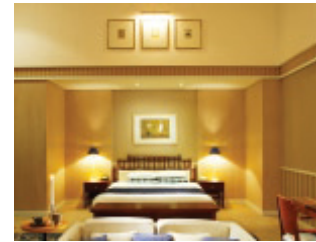
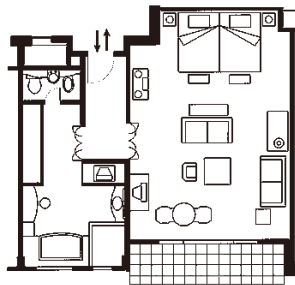
Room Type		Rooms	sq.ft.	m <sup>2</sup>
Suites	Pacific Suite	10	72	775
	Corner Suite	10	66	710
	Superior Suite	8	79	850
	Parlor Suite	6	79	850
	Royal Suite	2	158	1700
	Shilla Suite	1	264	2840
	Presidential North Wing	1	277	2980

### Superior Twin Room



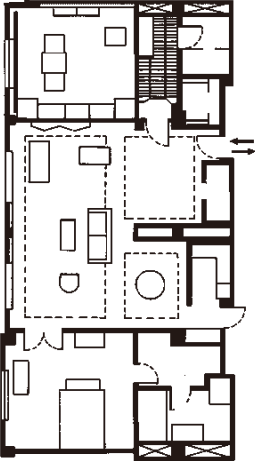
420 sq.ft. (39m<sup>2</sup>)  
 Bed Size 3'61" x 6'89" (110 x 210cm)

### Pacific Deluxe Room



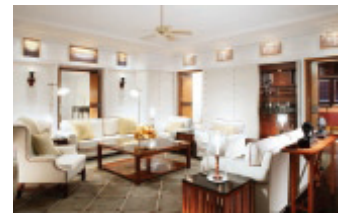
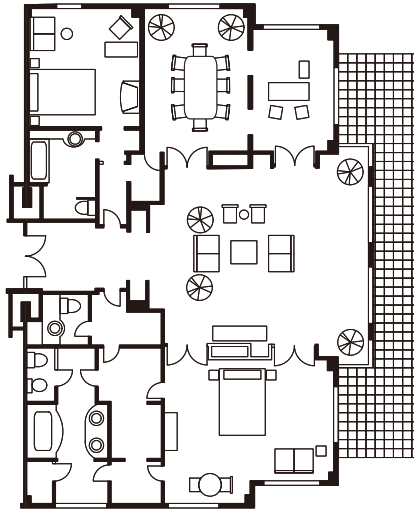
770 sq.ft. (72m<sup>2</sup>)  
 Bed Size 5'91" x 6'89" (180 x 210cm)

### Royal Suite



1700 sq.ft. (158m<sup>2</sup>)  
 Bed Size 6'69" x 7'22" (204 x 220cm)

### Presidential Suite



2980 sq.ft. (277m<sup>2</sup>)  
 Bed Size 6'89" x 7'74" (210 x 236cm)