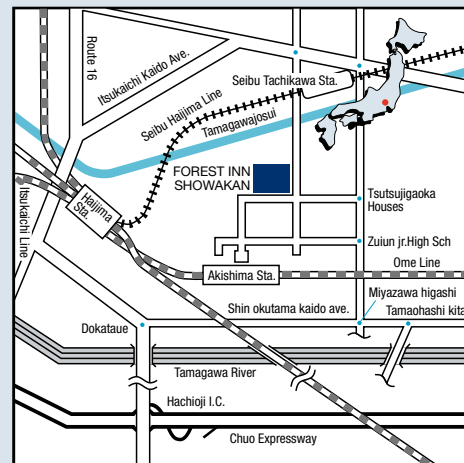




Forest Inn Showakan  
 Showa-no-Mori, Akishima, Tokyo  
 196-8601, Japan  
 Tel.81(42)542-1234 Fax.81(42)542-6000  
 http://www.showakan.co.jp/index2.html  
 e-mail: rooms.fis@showa-aircraft.co.jp



**General Information:** *Check-In:* 15:00 *Check-Out:* 12:00  
*Credit Cards Accepted:* VISA, JCB, AMEX, DINERS  
*Guest Rooms:* 97  
*Buildings:* Main Building (10 stories); Banquet Building (2 stories)  
*Established:* November 1998

**Location:** Tucked away in the lush green woods of Showa-no-Mori on the outskirts of Tokyo.

**Access:** By car: Chuo Expressway: 20 minutes from Hachioji Interchange; 30 minutes from Kunitachi/Fuchu Interchange  
 By train: 1 hour by express train from Tokyo Central Station by JR Chuo Line; Oume Line. 7-minute walk from North Exit of Akishima Station (JR Oume Line) \*Shuttle bus from North Exit of Akishima Station is also available.

**Restaurants:**

<i>Buffet Cuisine:</i> Centro	<i>Capacity</i>
<i>Chinese:</i> Ka-Lin (Private rooms available)	80
<i>Japanese:</i> Showa-no-mori Kurumaya (Private rooms available)	50
<i>Cafe Terrace:</i> ZENZERO	114
	48

**Bar:**

Lounge Dakota	<i>Capacity</i>
	65

**Facilities & Services:**

**Rooms**

- Air conditioning
- Alarm clock
- Daily newspaper
- Fax machine
- Hair dryer
- In-room safe
- International call
- Mini-bar/Refrigerator
- Non-smoking rooms
- Pay TV / Satellite TV

**Services**

- Laundry
- Safe-deposit box

**Other Facilities**

- Beauty shop
- Garden Chapel
- Parking lot (400 cars)
- Shopping arcade
- Shuttle bus to nearby stations
- Tea Room

**Recreation**

- S.P.A
- (w/Spa, massage facilities, dry&mist sauna, relaxation room)
- Karaoke rooms

**Nearby Facilities**

- Fitness Club
- Golf Course
- Tennis Club

**Banquet and Conference Facilities (Total of 10 rooms):**

	<i>Capacity</i>				<i>Area</i> <i>m<sup>2</sup></i>
	<i>Theater</i>	<i>School</i>	<i>Banquet</i>	<i>Reception</i>	
Sylvan Hall	1,200	750	750	900	1,200
Ourin	230	150	130	180	230
Chorin	240	150	140	230	240
Teatro Socie	—	89	—	—	230

**For reservations and further information, please contact your nearest Okura Hotels & Resorts Office:**

Continental U.S.A. / Canada Toll-free: 1-800-526-2281 / U.S.A. Office Tel: 1-303-404-2137, Fax: 1-303-404-2146 / U.K., France, Germany Toll-free: 00-800-6587-2737  
 Europe Office (Amsterdam) Tel: 31-20-678-7496, Fax: 31-20-678-7493 / Hong Kong Office Tel: 852-2895-1717, Fax: 852-2895-1909 / Taipei Office Tel: 886-2-2779-0501, Fax: 886-2-2779-0502  
 Seoul Office Tel: 82-2-766-5959 Fax: 82-2-766-0942

# Forest Inn Showakan

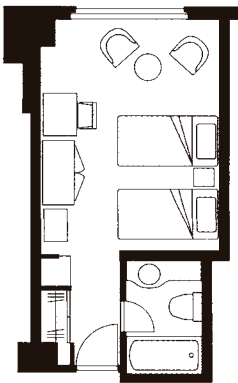
TOKYO, JAPAN.

Showa-no-Mori, Akishima, Tokyo 196-8601, Japan  
 Tel: 81(42)542-1234 Fax: 81(42)542-6000  
<http://www.showakan.co.jp/index2.html> e-mail: rooms.fis@showa-aircraft.co.jp

## Guest Rooms

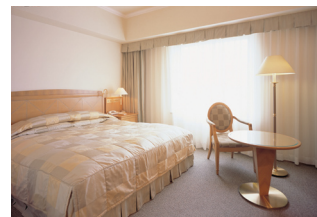
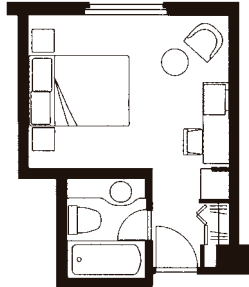
Room Type	Rooms	sq.ft.	m <sup>2</sup>
Standard Twin	69	98.4	30
Standard Double	11	82.0	25
Japanese Room	3	196.9	60
Suite	3	196.9	60
Corner Twin	8	147.6	45
Corner Double	2	147.6	45
Handicapped Room	1	98.4	30

### Standard Twin Room



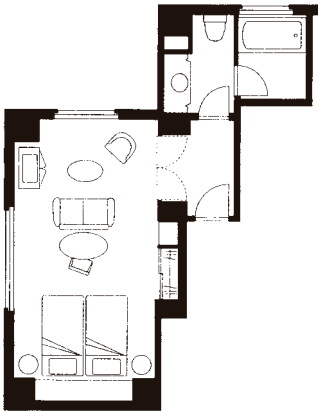
98.4sq.ft. (30m<sup>2</sup>)  
 Bed Size 3'94" x 6'56"

### Standard Double Room



82.0 sq.ft. (25m<sup>2</sup>)  
 Bed Size 5'91" x 6'56"

### Corner Twin



147.6 sq.ft. (45m<sup>2</sup>)  
 Bed Size 3'94" x 6'56"

### Flooring Suite



196.9 sq.ft. (60m<sup>2</sup>)  
 Bed Size 3'94" x 6'56"