

Hotel
Okura
AMSTERDAM

Hotel Okura Amsterdam
Ferdinand Bolstraat 333, 1072 LH Amsterdam,
The Netherlands
Tel.31(20)678-7111 Fax.31(20)671-2344
http://www.okura.nl/
e-mail: info@okura.nl



General Information: *Check-In: 15:00 Check-Out: 12:00*
Credit Cards Accepted: VISA, MASTER, DINERS, JCB, AMEX, EUROCARD
Guest Rooms: 301
Buildings: 23 stories
Established: September 1971

Location: The hotel is situated at one of Amsterdam's famous canals, next to the RAI Congress & Exhibition Centre, close by the World Trade Centre and by the city's cultural attractions like the Rijksmuseum and the Van Gogh museum. Schiphol International Airport is only a 15-minute drive away and the city's major motorways are easily accessible.

Access: Schiphol International Airport : 15 minutes by car
Station Rai : 10 minutes on foot
Central Station : 15 minutes by tram

Restaurants:	<i>Capacity</i>	Bars:	<i>Capacity</i>
<i>Japanese: Yamazato</i> (Private rooms available)	120	La Serre Bar	70
<i>Teppanyaki: Sazanka</i> (Private rooms available)	90	Twenty Third Bar	37
<i>European: Le Camelia</i> (w/Royal Dutch Buffet Breakfast)	120		
<i>French: Ciel Bleu</i> (Private rooms available)	76		

Facilities & Services:

Rooms

- Air conditioning
- Alarm clock
- Daily newspaper
- Executive floors
- Fax machine
- In-room safe
- International call
- Internet TV/High-speed access
- Mini-bar
- Pay TV/Satellite TV
- Trouser press

Services

- Airport shuttle
- Business center (personal computer with internet access, etc.)
- Cash dispenser
- Concierge-desk
- Currency exchange (24hours)
- Executive lounge
- Jet lag programme
- Porter service
- Room service (24hours)
- Safe-deposit box
- Same day laundry & dry cleaning service
- Secretarial services
- Shoeshine

Other Facilities

- Taste of Okura (Culinary Center)
- Japanese garden
- Parking lot (140 cars)
- Traditional Japanese sauna & massage
- Shopping arcade
 - Beauty salon
 - Fashion/Leather goods
 - Men's barbershop

Recreation

- Okura Health Club (w/fitness centre, indoor swimming pool, jet stream, saunas, Turkish bath, solarium, etc.)
- Own landing dock

Banquet and Conference Facilities (19 rooms & 2 foyers):

	<i>Capacity</i>				<i>Area</i>	
	<i>Theater</i>	<i>School</i>	<i>Banquet</i>	<i>Reception</i>	<i>m²</i>	<i>sq.ft.</i>
Grand Ballroom	1,155	648	720	1,200	902	9,688
Heian Room	520	350	330	630	442	475
Otter/Esperance Room	160	100	120	150	165	1,775
Griffioen Room	135	86	80		128	1,399
Meerman Room	60	40	30	60	74	798
Sperwer Room	45	24	30	40	52	559
Board Room	Board room table 16 persons					614
Starlight Room	90	69	60	120	101	1,142
Starlight Room	Board room table 24 persons					65

For reservations and further information, please contact your nearest Okura Hotels & Resorts Office:

Korea Sales Office: Tel. 82(2)766-5959, Fax. 82(2)766-5964 / Hong Kong Sales Office: Tel. (852)2895-1717, Fax. (852)2895-1909 / Taiwan Sales Office: Tel. 886(2)2706-0365, Fax. 886(2)2706-0009
New York Sales Office: Tel. 1(212)845-0563 / Los Angeles Sales Office: Tel. 1(424)214-1503 / London Sales Office: Tel. (44) 20-7290-5074 / Paris Sales Office: Tel. (33) 1-5367-1027
Frankfurt Sales Office: Tel. (49) 69-13885-124 / Moscow Sales Office: Tel. (7) 495-221-7412

Hotel Okura Amsterdam

AMSTERDAM, THE NETHERLANDS

Ferdinand Bolstraat 333, 1072 LH Amsterdam, The Netherlands
 Tel: 31(20)678-7111 Fax: 31(20)671-2344
 http://www.okura.nl/ e-mail: info@okura.nl

Guest Rooms

Room Type	Rooms	sq.ft.	m ²
Standard	118	279.86	26
Corner Room	35	355.20	33
Deluxe Room	36	419.79	39
Executive Room	26		
Junior Suite	24	419.79	39
Deluxe Junior Suite	20	538.19	52
Executive Junior Suite	22		
Suite	4	645.00	from 60
Corner Suites	15		
Royal Suite	1	968.75	90
Baron Okura Suite	1	1130.21	105
Presidential Suite	1	1291.67	120
THE SUITE	1	5220.50	485
The Cullinan Suite	(1) part of The Suite	1485.00	138
Excelsior Suite	(1) part of The Suite	1485.00	138

Executive Lounge



Deluxe Junior Suite



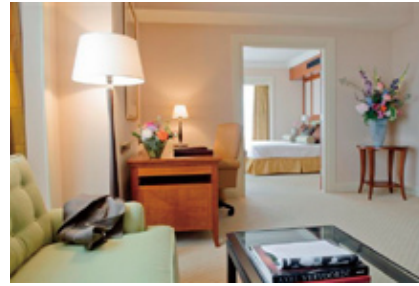
543.47 sq.ft. (50m²)
 Bed Size 5'90" x 6'56" (180 x 200cm)

Deluxe Room



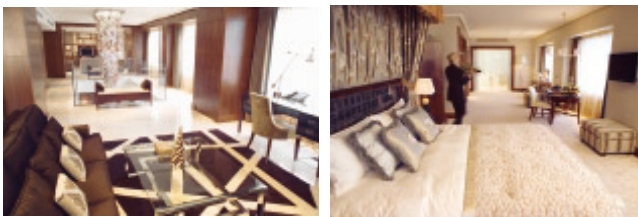
419.79 sq.ft. (39m²)
 Bed Size 5'90" x 6'56" (180 x 200cm)

Executive Corner Suite



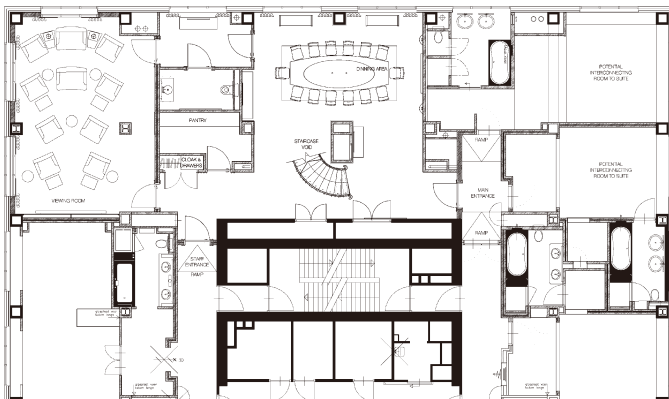
555.56 sq.ft. (51m²)
 Bed Size 3'28" x 6'56" (100 x 200cm)

THE SUITE



5220.50 sq.ft. (485m²) Divided over 2 floors
 Bed Size 6'56" x 6'89" (200 x 210cm)

<17th floor>



<18th floor>

