



GENERAL AMENITIES

All rooms are equipped with:

- full-size writing desk and WiFi,
- radio and TV,
- luxurious marble bathroom.
- minibar,
- safety box,
- air-conditioning,

Most of the rooms offer a panoramic view of the city.

STANDARD ROOM

Size: 26 sq.m / 280 sq.ft



DELUXE ROOMS

In addition to the amenities mentioned before, the Deluxe Rooms and Deluxe Junior Suites are also equipped with:

- an in-room control unit for mood lighting, curtains, alarm clock and temperature,
- a 32-inch LCD television,
- sockets for Swiss, Dutch, French and English plugs,
- a spacious free-standing desk with adjustable leather desk chair,
- a fixed ADSL connection.

The luxurious bathrooms are equipped with:

- heated mirrors (to stop them from steaming up),
- orientation lights at night,
- a separate hairdryer,
- a separate shower stall with rain shower,
- a 17-inch LCD television.

DELUXE ROOM

Size: 39 sq.m / 420 sq.ft



EXECUTIVE FLOORS

17TH -22ND FLOOR

In addition to the deluxe room amenities mentioned before, the Executive Rooms and Executive Junior Suites provide access to the Executive Lounge located on the 22nd floor. It is possible to have breakfast at the Executive Lounge which has its own meeting room/ lounge. Free high-speed internet is available in the Executive Lounge. Guests on these floors also receive complimentary access to the Executive Health Club as well as a complimentary bottle of mineral water in the room.

EXECUTIVE ROOM

EXECUTIVE JUNIOR SUITE



Rates are exclusive 5% city tax. All rates quoted include 6% VAT. Group rates on request. All rates and taxes are subject to change without notice.

All transactions are made under the Uniform Conditions of Hotel-Industry (U.V.H.), filed at the Court of The Hague and The Chamber of Commerce, copy available on request.



DELUXE JUNIOR SUITE

Size: 50 sq.m / 538 sq.ft





EXECUTIVE CORNER SUITE

Size: 60/80 sq.m / 646/860 sq.ft

Extra: Spacious living room and bedroom with panoramic view of the city. This suite is located on the Executive Floors and offers the same facilities as the Deluxe Rooms.

ROYAL SUITE

Size: 90 sq.m / 967 sq.ft

Extra: Spacious separate living room and bedroom with the option of connecting an extra room to the suite. All with panoramic view of the city.



THE SUITE

The Suite is located on the 17th and 18th floors of the hotel. Its 485 m² surface area makes it the most spacious and luxurious suite in the Benelux countries. It can be divided into two suites: The Cullinan Suite and The Excelsior Suite, each with a lounge, an oversized bathroom and a walk-in closet. The Suite also offers a cinema and a dining room for up to 14 guests.



Size: 485 sq.m / 5220 sq.ft

For more information about The Suite please visit www.okura.nl/thesuitefilm

BARON OKURA SUITE

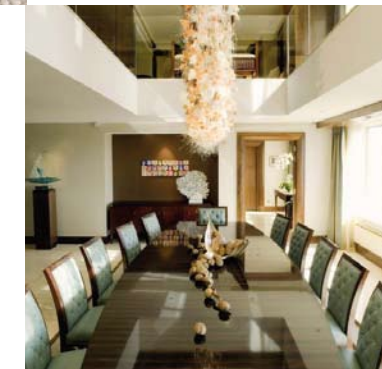
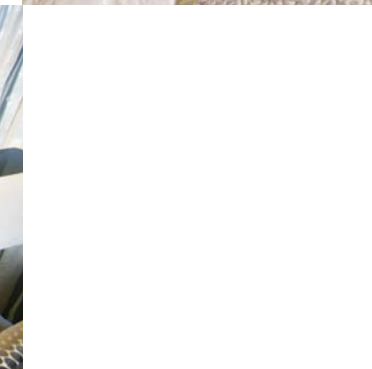
Size: 105 sq.m / 1130 sq.ft

Extra: Attractive to long-staying guests, with fully equipped kitchen and separate hallway with access to a second bedroom.

PRESIDENTIAL SUITE

Size: 150 sq.m. / 1615 sq.ft

Extra: Situated on the 21st floor of the hotel with a lovely view of the city. Separate living room equipped with a bar, and a spacious desk, dining or meeting room. Separate toilet for guests.



ROOM OVERVIEW 2010

Hotel
Okura
AMSTERDAM