



THE KAHALA
HOTEL & RESORT
Honolulu, Hawaii

The Kahala Hotel & Resort
5000 Kahala Ave, Honolulu, Hawaii 96815-5498
Tel: 808-739-8888 Fax: 808-739-8800
<http://www.kahalaresort.com/>



General Information:

Check-in: 15:00 **Check-Out:** 12:00
Credit Cards Accepted: VISA, MC, JCB, AMEX, DINERS, DISCOVER
Guest Rooms: 338
Buildings: Main Tower with two wings, ten stories each. 2-story Dolphin wing
Established: January 1964, completely refurbished 2009

Location:

A luxury hotel situated on an ideal beachfront location in the exclusive Kahala district on the island of Oahu. The Kahala Hotel & Resort is just 10 minutes from the world-class shopping and entertainment of Waikiki and 15 minutes from the Hawaii Convention Center. The resort overlooks both Diamond Head and Koko Head.

Access:

The Kahala is located 20 minutes by rental car or taxi from Honolulu International Airport, Hawaii's main gateway for flights to and from mainland US, Asia, Europe, Australia and New Zealand.

Restaurants:

Contemporary Cuisine: Hoku's
Casual Cafe: Plumeria Beach House
Tea Lounge and Nightly Entertainment: The Veranda
Contemporary Seafood: Seaside Grill

Bars:

Plumeria Beach House
The Veranda
Seaside Grill

Facilities & Services:

Rooms

40 inch LCD televisions	International direct dial
ADA compliant rooms available	In-room safe
Central air conditioning	In-room video games
CD player/clock radio w/MP3 connection	Mini-bar/refrigerator
Chenille bath robes	Non-smoking rooms
Daily morning newspaper	Oversized showerheads
Deep-soaking bath tub and shower	Pay TV/Cable TV
Dual wardrobe closets	Tea and coffee maker
Electrical adapters	- w/complimentary tea and coffee
Floris of London toiletries, Asprey	TOTO washlets in suites and selected rooms
London toiletries in suites	Tropical fans
Hair dryer	Two line phones
High-speed wireless internet access in:	Two separate vanity areas
- Rooms and Suites	Work desk
- Public areas and function rooms	

Services

Babysitting service
Business center
Car rental
Children's programs
Currency exchange
Dining reservations
Fitness programs
Full concierge and tour services
Hawaiian cultural programs
Laundry/Valet services
Multi-lingual staff
Nightly turndown service
Room service (24 hours)
Safe-deposit box

Other Facilities

Beach cabanas
The Kahala Spa
Kahala logo boutique
Parking (self and valet)
Spa Suites

Recreation

Dolphin educational and interaction programs
Fitness center
Jacuzzi/Steam bath
Outdoor swimming pool
Swimming beach
Plumeria beach house
- complimentary morning coffee and tea

Banquet and Conference Facilities:

	Capacity			Reception	Area sq. ft.
	Theater	School	Banquet		
Maile Ballroom	400	260	300	450	5,200
Maile Ballroom w/Foyer	500	340	450	600	8,800
Waialae Ballroom	100	60	120	150	2,700
Kainoa I	20	16	-	20	415
Kainoa II	-	-	12	-	415
Kahala O Ke Kai	-	-	88	140	-
Koko Head Lawn	-	-	200	350	8,000

For reservations and further information, please contact your nearest Okura Hotels & Resorts Office:

Korea Sales Office: Tel. 82(2)766-5959, Fax. 82(2)766-5964 / Hong Kong Sales Office: Tel. (852)2895-1717, Fax. (852)2895-1909 / Taiwan Sales Office: Tel. 886(2)2706-0365, Fax. 886(2)2706-0009
New York Sales Office: Tel. 1(212)845-0563 / Los Angeles Sales Office: Tel. 1(424)214-1503 / London Sales Office: Tel. (44) 20-7290-5074 / Paris Sales Office: Tel. (33) 1-5367-1027
Frankfurt Sales Office: Tel. (49) 69-13885-124 / Moscow Sales Office: Tel. (7) 495-221-7412

The Kahala Hotel & Resort

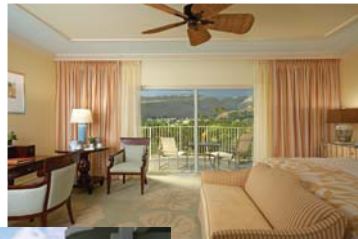
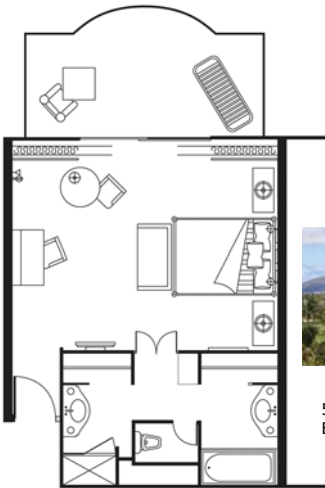
HAWAII, U.S.A.

5000 Kahala Ave, Honolulu 96816-5498
Tel: 1(808)739-8888 Fax: 1(808)739-8800
<http://www.kahalaresort.com/>

Guest Rooms

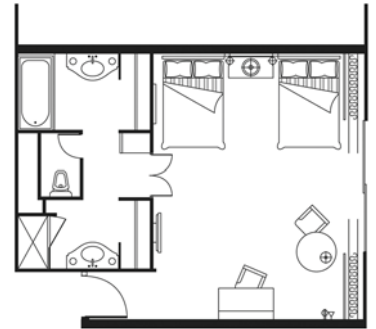
Room Type	Rooms	sq.ft.	m ²
Garden	9	550	51
Mountain (No Lanai)/(Lanai)	73/24	550	51
Partial Ocean View (No Lanai)/(Lanai)	15/53	550	51
Dolphin Lanai	35	550	51
Ocean View (No Lanai)/(Lanai)	21/28	550	51
Ocean Front (No Lanai)/(Lanai)	19/17	550	51
Beach Front Lanai	12	550	51
Partial Ocean View Suite	11	1100	102
Ocean Front Suite	18	1100	102
Beach Front Suite	1	1250	102
Kahala Suite	1	1250	102
Presidential Suite	1	2200	240

Partial Ocean View Lanai



550sq.ft.(51m²)
Bed Size 6'4" x 6'8"

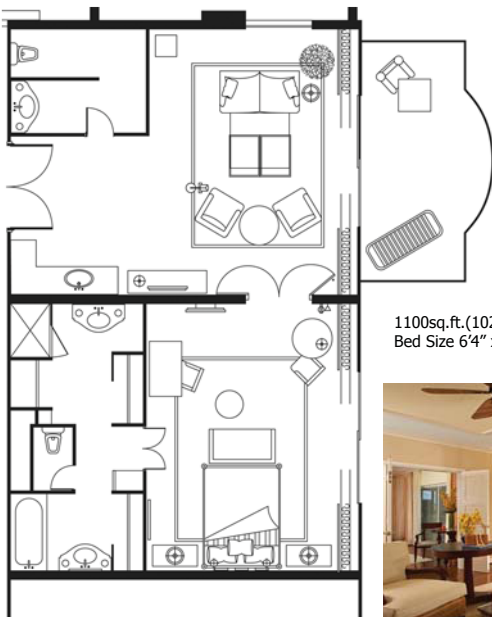
Koko Head Ocean Front



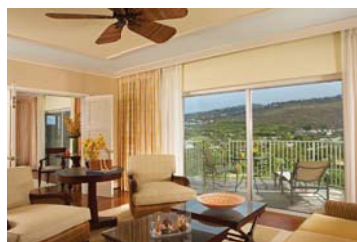
550sq.ft.(51m²)
Bed Size 4'6" x 6'3" each



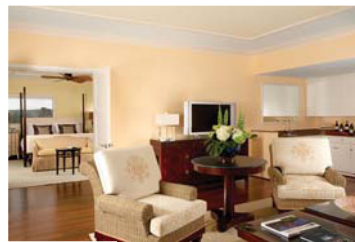
Ko'olau Partial Ocean View Suite



1100sq.ft.(102m²)
Bed Size 6'4" x 6'8"



Koko Head Ocean Front Suite



1100sq.ft.(102m²)
Bed Size 6'4" x 6'8"

