

THE SHILLA SEOUL

The Shilla Seoul
202 Jangchung-dong, 2-ga, Jung-gu,
100-856 Seoul, Korea
Tel.82(2)2233-3131 Fax.82(2)2233-5073
http://www.shilla.net/en/seoul/
e-mail: shilla.reserve@samsung.com



General Information: *Check-In:* 15:00 *Check-Out:* 12:00
Cards Accepted: VISA, JCB, DINERS, AMEX, MASTER
Guest Rooms: 462
Buildings: Main Building (23 stories); Duty Free Building (2 stories)
Established: March 1979

Location: An imposing, modern high-rise set in 23 acres of wooded parkland in central Seoul. 90 minutes drive from Incheon International Airport and 10 minutes drive from the city's main banking and financial center.

Access: 90 minutes from Incheon International Airport
20 minutes from Seoul Station / 60 minutes from Gimpo International Airport

Restaurants:	<i>Capacity</i>	Bars:	<i>Capacity</i>
<i>Japanese: Ariake</i> (Private rooms available)	94	The Library	155
<i>Chinese: Palsun</i> (Private rooms available)	156		
<i>European Dining: Continentale</i> (Private rooms available)	92		
<i>All Day Dining: The Parkview</i>	359		

Facilities & Services:

Rooms

Air conditioning
Alarm clock
Billing inquiry TV system
Daily newspaper
Facilities for physically challenged guests
Fax machine (Executive floors)
Hair dryer
In-room safe
International call
Internet high-speed access
Internet wireless connection
Mini-bar/Refrigerator
Mobilephone service
Non-smoking rooms
Pay TV/Satellite TV
Separate shower and bath

Services

Currency exchange
Executive Service Room
(w/private meeting room,
secretarial services, personal
computer w/internet access,
etc.)
Laundry/Valet service
Massage/Shiatsu
Physician
Room service (24 hours)
Safe-deposit box

Other Facilities

Airline counter
Barber shop
Beauty shop
Parking lot (700cars)
Pharmacy
Shoeshine
Shopping arcade
Dongdaemun
Shuttle bus to Itaewon and Myongdong
Shuttle bus to nearby subway stations
Travel agency
Duty free shop

Recreation

Fitness club
(w/gym, indoor swimming pool,
sauna, massage, etc.)
Outdoor swimming pool
Spa
La clinique de paris

Banquet and Conference Facilities (Total of 13 rooms):

	Capacity				Area m ²
	Theater	School	Banquet	Reception	
Dynasty	1,200	900	850	1,000	1,325.0
Ruby	250	150	180	200	300.0
Topaz	220	140	140	180	255.0
Emerald	250	150	140	200	233.0
Marronnier	90	60	60	80	105.2
Maple	30	—	40	50	78.0
Lilac	150	90	100	120	180.0
Orchid	120	60	70	100	130.0
Pine	—	—	24	30	53.0
Bamboo	—	—	24	30	53.0
Plum	—	—	24	30	53.0
Etoiles	—	—	24	30	71.3
Prado	—	—	16	30	54.9

For reservations and further information, please contact your nearest Okura Hotels & Resorts Office:

Korea Sales Office: Tel. 82(2)766-5959, Fax. 82(2)766-5964 / Hong Kong Sales Office: Tel. (852)2895-1717, Fax. (852)2895-1909 / Taiwan Sales Office: Tel. 886(2)2706-0365, Fax. 886(2)2706-0009
New York Sales Office: Tel. 1(212)845-0563 / Los Angeles Sales Office: Tel. 1(424)214-1503 / London Sales Office: Tel. (44) 20-7290-5074 / Paris Sales Office: Tel. (33) 1-5367-1027
Frankfurt Sales Office: Tel. (49) 69-13885-124 / Moscow Sales Office: Tel. (7) 495-221-7412

The Shilla Seoul

SEOUL, KOREA

202 Jangchung-dong, 2-ga, Jung-gu, 100-856 Seoul, Korea
 Tel: 82(2)2233-3131 Fax: 82(2)2233-5073
<http://www.shilla.net/en/seoul/> e-mail: shilla.reserve@samsung.com

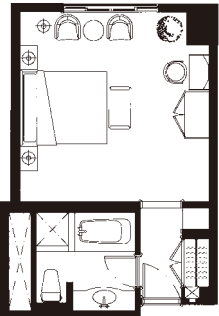
Guest Rooms

Room Type		Rooms	sq.ft.	m ²
Normal Floor	Superior	88	280	26
	Deluxe	128	377	35
	Grand Deluxe	64	549~571	51~53

Room Type		Rooms	sq.ft.	m ²
Executive Floor	Deluxe	79	377	35
	Grand Deluxe	78	549~571	51~53

Room Type	Rooms	sq.ft.	m ²
Korean Suite	2	571	53
Studio	12	689	64
Premier	7	797~947	86~88
Royal Suite	2	1270	118
Presidential Suite South Wing	1	2314	280
Presidential Suite North Wing	1	3918	291

Deluxe Double Room



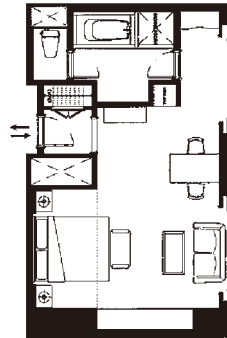
377sq.ft.(35m²)

Deluxe Twin Room



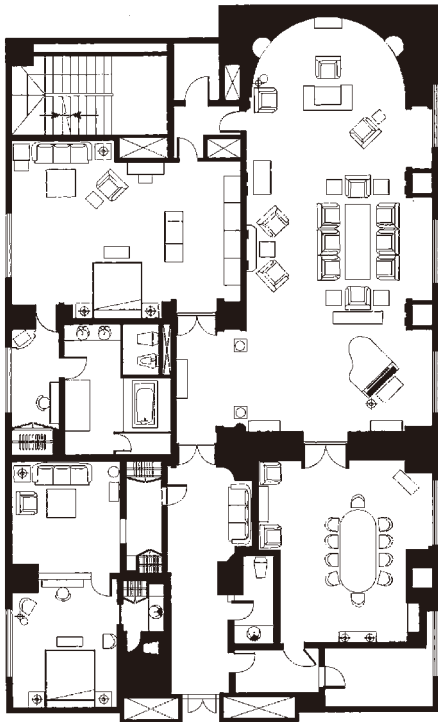
377sq.ft.(35m²)

Grand Deluxe



280sq.ft.(53m²)

Presidential Suite



1270sq.ft.(364m²)